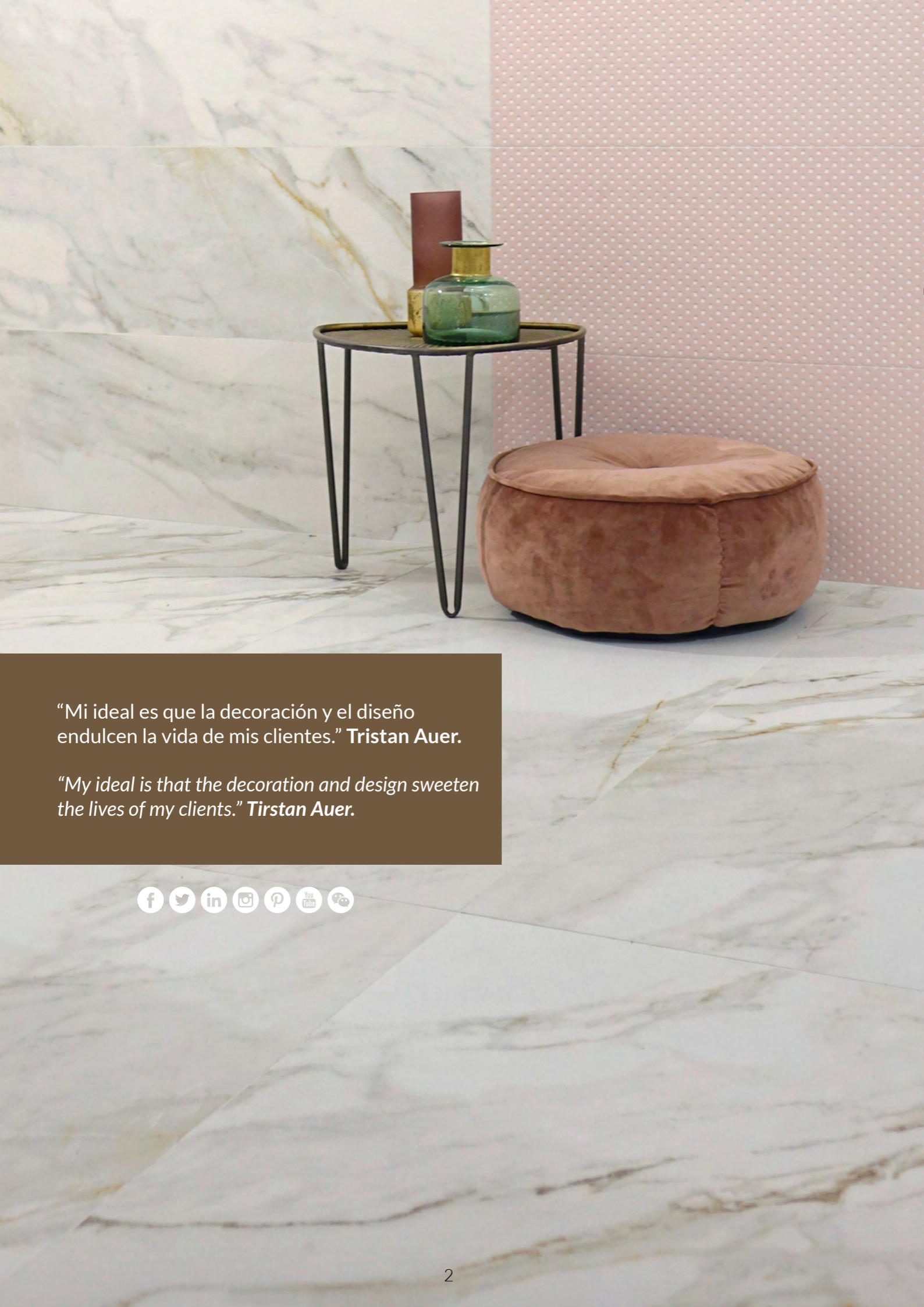


The image shows a close-up of a white fabric with a repeating pattern of gold-embossed fern fronds. The fronds are detailed and have a shimmering, metallic finish. A dark brown rectangular box is overlaid on the right side of the image, containing the text 'MACCHIA VECCHIA' in a large, white, sans-serif font, and 'Collection' in a smaller, white, sans-serif font below it.

MACCHIA VECCHIA
Collection

www.azteca.es



“Mi ideal es que la decoración y el diseño endulcen la vida de mis clientes.” **Tristan Auer.**

“My ideal is that the decoration and design sweeten the lives of my clients.” **Tirstan Auer.**



Azteca es una firma dedicada al diseño y comercialización de revestimientos para el entorno del hábitat y la fabricación de productos cerámicos, atendiendo a las principales tendencias contemporáneas, con el objetivo de solucionar las necesidades tanto de clientes como de prescriptores, siempre a través de la calidad y el servicio.

La experiencia y el equipo humano son el motor de la excelencia de Azteca y la tecnología y responsabilidad con el medio ambiente los valores que definen el compromiso de la marca de atender a las inquietudes del mercado dentro del mundo del interiorismo, la arquitectura y la construcción de espacios únicos.

Diseña, crea y disfruta de espacios únicos.

Azteca is a firm dedicated to the design and commercialization of coatings for the habitat environment and the manufacture of ceramic products, attentive to the main contemporary trends, with the objective of solving the needs of both clients and consultants, always through quality and service.

The experience and the human team are the driving force behind Azteca's excellence, and technology and responsibility towards the environment are the values that define the brand's commitment to address the concerns of the market within the world of interior design, architecture, and the construction of unique spaces.

Design, create, and enjoy unique spaces.

MACCHIA VECCHIA Collection

MACCHIA VECCHIA 120 Page 8-9
MACCHIA VECCHIA 60 Page 10
MACCHIA VECCHIA 3060 Page 11
MACCHIA VECCHIA R90 Page 12-13



Wall: Dots R90 matt grey - Floor: Macchia Vecchia Nat120 silver.

FORMATOS · SIZES Porcelánico · Porcelain

60x120 cm
23,6"x47,2"

MACCHIA VECCHIA NAT 120 | B85
MACCHIA VECCHIA LUX 120 | B83

60x60 cm
23,6"x23,6"

MACCHIA VECCHIA NAT 60 | B35
MACCHIA VECCHIA LUX 60 | B37

30x60 cm
11,8"x23,6"

MACCHIA VECCHIA NAT 3060 | B35
MACCHIA VECCHIA LUX 3060 | B37

Lienzo 1x3 m · Graphic chart 39,4"x118,1"

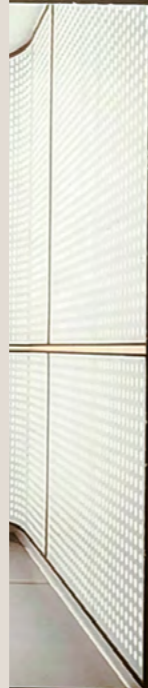
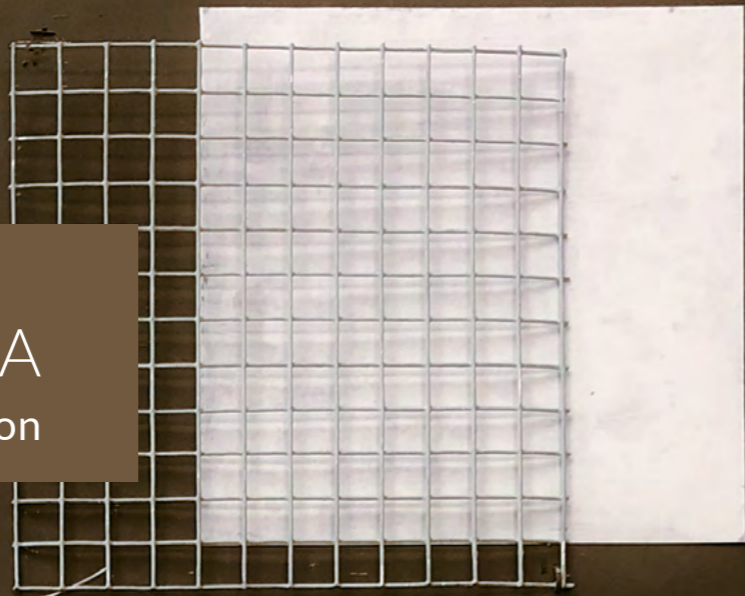
Pasta Blanca · White Body

30x90 cm
11,8"x35,4"

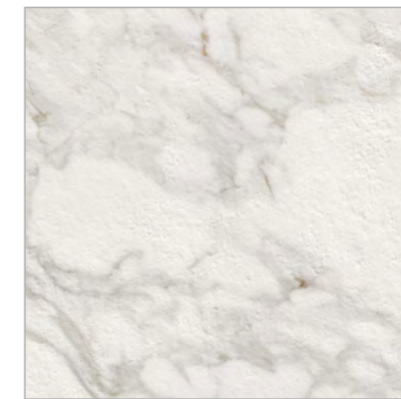
MACCHIA VECCHIA R90 MATT | B42

Lienzo 1x3 m · Graphic chart 39,4"x118,1"

MACCHIA VECCHIA
Collection



ACABADOS · FINISHED
Porcelánico · Porcelain

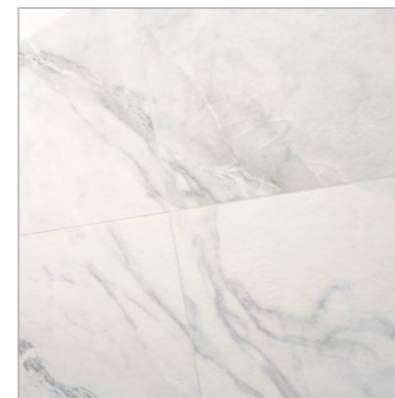


NAT | MATE · MATT

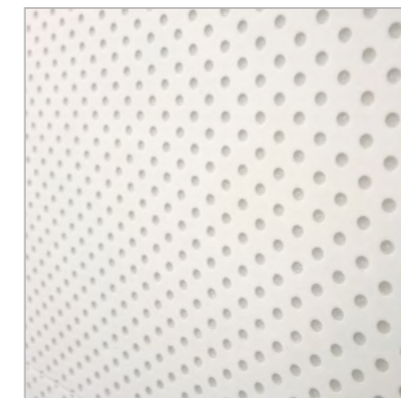


LUX | LAPADO BRILLO · GLOSSY LAPATTO

Pasta Blanca · White Body



MACCHIA VECCHIA | MATE · MATT



DOTS | MONOCOLOR · SOLID COLOR



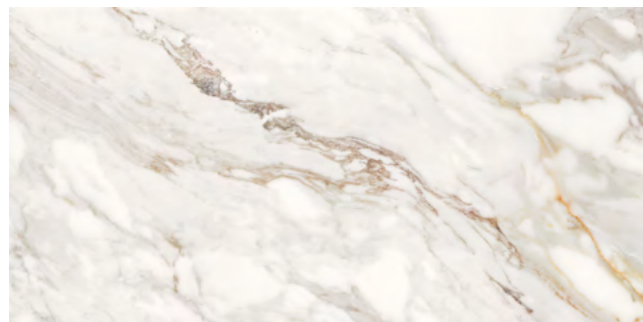
DECORADO PALM | EFECTOS DIGITALES · DIGITAL EFFECTS FINISHING

MACCHIA VECCHIA

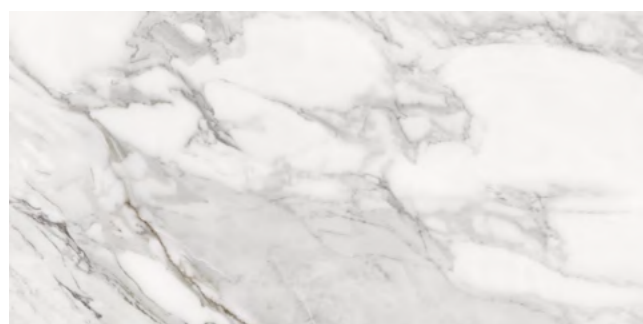
Porcelánico · Porcelain

60x120 cm
23,6"x47,2"

Macchia Vecchia Nat 120 | B85
Macchia Vecchia Lux 120 | B83



Gold



Silver



Wall: Macchia Vecchia R90 gold matt, Dots R90 rose matt,
Floor: Macchia Vecchia nat 120 gold.



Wall: Macchia Vecchia R90 silver matt, Dots R90 grey matt,
Floor: Macchia Vecchia nat 120 silver.

AZTECA

RECTIFIED PORCELAIN |
NAT: NATURAL · NATURAL |



RECTIFIED PORCELAIN |
LUX: LAPADADO BRILLO · GLOSSY LAPATTO |

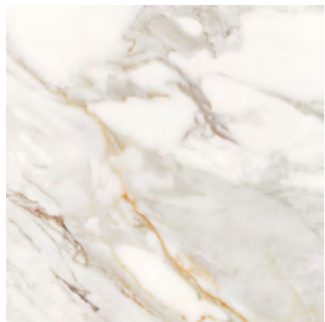


MACCHIA VECCHIA

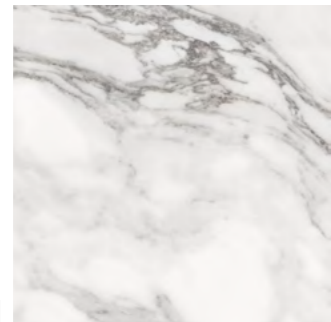
Porcelánico · Porcelain

60x60 cm
23,6"x23,6"

Macchia Vecchia Nat 60 | B35
Macchia Vecchia Lux 60 | B37



Gold



Silver



MOSAICO MACCHIA V. NAT PICKET GOLD | 27,4x29,8 cm | P15
MOSAICO MACCHIA V. LUX PICKET GOLD | 27,4x29,8 cm | P15



MOSAICO MACCHIA V. NAT PICKET SILVER | 27,4x29,8 cm | P15
MOSAICO MACCHIA V. LUX PICKET SILVER | 27,4x29,8 cm | P15



MOSAICO MACCHIA V. NAT TS GOLD | 30x30 cm | P70
MOSAICO MACCHIA V. LUX TS GOLD | 30x30 cm | P60



MOSAICO MACCHIA V. NAT TS SILVER | 30x30 cm | P70
MOSAICO MACCHIA V. LUX TS SILVER | 30x30 cm | P60



Wall: Macchia Vecchia R90 silver matt, Dots R90 pearl matt,
Floor: Macchia Vecchia Nat 60 silver.



Wall: Decorado Palm R90 white matt,
Floor: Macchia Vecchia Lux 120 silver.

MACCHIA VECCHIA

Porcelánico · Porcelain

30x60 cm
11,8"x23,6"

Macchia Vecchia Nat 3060 | B35
Macchia Vecchia Lux 3060 | B37



Gold



Silver

AZTECA

RECTIFIED PORCELAIN |
NAT: NATURAL · NATURAL |



RECTIFIED PORCELAIN |
LUX: LAPADADO BRILLO · GLOSSY LAPATTO |



MACCHIA VECCHIA

Pasta Blanca · White body

30x90 cm
11,8"x35,4"

Macchia Vecchia R90 matt | B42
Decorado Palm R90 matt | B44
Dots R90 matt | B44

30x90 cm · 11,8"x35,4"
Macchia Vecchia R90 matt · B42



Gold



Silver

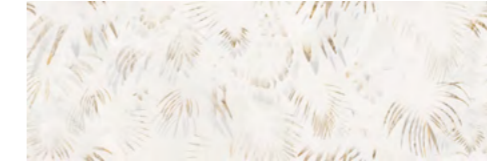


Wall: Decorado Palm R90 white matt.



Wall: Macchia Vecchia R90 silver matt, Dots R90 grey matt
Floor: Macchia Vecchia Nat. 120 silver

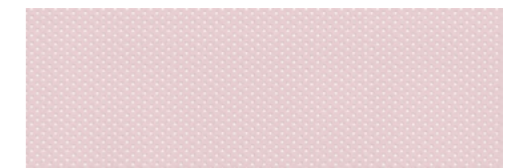
30x90 cm · 11,8"x35,4"
Decorado Palm R90 matt · B44



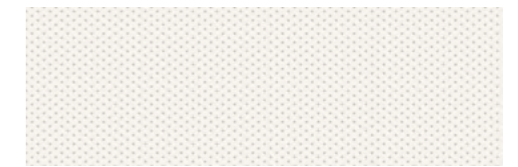
White

5 piezas diferentes · 5 different pieces

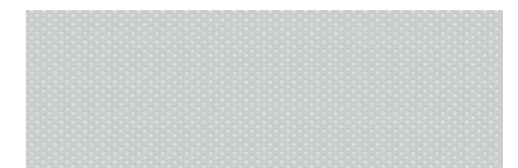
30x90 cm · 11,8"x35,4"
Dots R90 matt · B44



Rose



White



Pearl



Grey

AZTECA

RECTIFIED WHITE BODY |
MATT: MATE · MATTI



MACCHIA VECCHIA Collection

Wall: Dots R90 rose matt, Macchia Vecchia R90 gold matt - Floor: Macchia Vecchia Nat 60 gold.



MACCHIA VECCHIA Collection

Wall: Decorado Palm R90 white matt, Macchia Vecchia R90 silver matt - Floor: Macchia Vecchia Lux 120 silver.



MACCHIA VECCHIA Collection

Wall: Dots R90 rose matt, Macchia Vecchia R90 gold matt · Floor: Macchia Vecchia Nat 120 gold.



DESCRIPCIÓN DE ICONOS | ICONS DESCRIPTION

SOPORTE · BODY		COLOCACIÓN · LAYING		ACABADO · FINISHED	
ICONO ICON	DESCRIPCIÓN DESCRIPTION	ICONO ICON	DESCRIPCIÓN DESCRIPTION	ICONO ICON	DESCRIPCIÓN DESCRIPTION
	Piezas realizadas en porcelánico. Porcelain tiles.		Piezas aptas para colocación sólo en pared. Tiles suitable for laying only on walls.		Piezas rectificadas. Rectified tiles.
	Piezas realizadas en pasta blanca. White body tiles.		Piezas aptas para colocación tanto en pared como en suelo. Tiles suitable for laying on wall and floor.		Piezas con acabado mate. Matt-finishing tiles.
	Piezas con volumen. Voluminous.		Recomendable no dejar una junta inferior a 1,5 mm. Recommended to use a joint of not less than 1,5 mm.		Piezas con acabado "lapatto" brillo. Glossy "Lapatto" finishing tiles.
CARACTERÍSTICAS TÉCNICAS TECHNICAL CHARACTERISTICS			Se aconseja que la colocación a rompejunta no supere el 20% del lado sobre el que se aplica. We recommend that discontinuous laying does not exceed 20% of the side to which it is applied.		Piezas con efectos digitales. Digital effects finishing tiles.
	Antihielo. No frost.		Se recomienda el uso de sistemas nivelados para garantizar una correcta colocación. We recommend the use of levelled systems in order to guarantee a proper arrangement.		Bajo efecto destonificado. Slight shade variation.
	Resistencia al deslizamiento. Slip resistance.				

PHYSICAL AND CHEMICAL PROPERTIES | PROPIEDADES FÍSICO-QUÍMICAS

ICONOS ICONS	CARACTERÍSTICAS TÉCNICAS TECHNICAL CHARACTERISTICS	MÉTODO DE LA NORMA STANDARD TEST METHOD	VALOR NORMA REQUIREMENT	GRES PORCELÁNICO PORCELAIN TILES	REVESTIMIENTO WALL TILES	
	RESISTENCIA A LA HELADA FROST RESISTANCE	ISO 10545-12	RESISTENTE RESISTANT	CUMPLE PASSES	---	
	RESISTENCIA A LA ROTURA BREAKING STRENGTH	ISO 10545-4	≥ 1300 N (porcelain tiles) ≥ 600 N (wall tiles)	CUMPLE PASSES	CUMPLE PASSES	
	RESISTENCIA A LA FLEXIÓN MODULUS OF RUPTURE	ISO 10545-4	≥ 35 N / mm ² (porcelain tiles) ≥ 12 N / mm ² (wall tiles)	CUMPLE PASSES	CUMPLE PASSES	
	RESISTENCIA AL RAYADO (MOHS) SCRATCH RESISTANCE (MOHS)	UNE EN-101	VALOR DECLARADO DECLARED VALUE	SEGÚN MODELO ACCORDING TO MODEL	---	
	RESISTENCIA AL DESLIZAMIENTO SLIP RESISTANCE	UNE-41901	VALOR DECLARADO DECLARED VALUE	 	SEGÚN MODELO ACCORDING TO MODEL	
		DIN 51130	VALOR DECLARADO DECLARED VALUE			
		BS 7976-2:2002 +A1:2013	H 0-24 M 25-35 L 36+			
		ANSI A 137.1 (DCOF)	< 0,42 ≥ 0,42			
	RESISTENCIA AL DESLIZAMIENTO SLIP RESISTANCE	DIN 51097	A: >12° A+B: >18° A+B+C: >24°	SEGÚN MODELO ACCORDING TO MODEL	---	
	RESISTENCIA AL ATAQUE QUÍMICO CHEMICAL RESISTANCE	ISO 10545-13	Resistencia a ácidos y álcalis de baja concentración.	VALOR DECLARADO DECLARED VALUE	SEGÚN MODELO ACCORDING TO MODEL	
			Resistencia a ácidos y álcalis de alta concentración.	VALOR DECLARADO DECLARED VALUE	CUMPLE PASSES	CUMPLE PASSES
			Resistencia a productos domésticos y sales para piscinas.	MÍNIMO CLASE B MINIMUM CLASS B		
	RESISTENCIA A LAS MANCHAS STAIN RESISTANCE	ISO 10545-14	MÍNIMO CLASE 3 MINIMUM CLASS 3	CUMPLE PASSES	CUMPLE PASSES	
	ABSORCIÓN DE AGUA (E) WATER ABSORPTION (E)	ISO 10545-3	E< 0,5% (porcelain tiles) E>10% (wall tiles)	CUMPLE PASSES	CUMPLE PASSES	
	RESISTENCIA A LA ABRASIÓN ABRASION RESISTANCE	ISO 10545-7	VALOR DECLARADO DECLARED VALUE	SEGÚN MODELO ACCORDING TO MODEL	---	

MACCHIA VECCHIA Collection

Wall: Dots R90 grey matt, Macchia Vecchia R90 silver matt.



BALDOSA CERÁMICA: RECOMENDACIONES DE USO | RECOMMENDED USE

Nuestros productos han sido concebidos para diferentes usos siendo clasificados mediante ensayos técnicos en seis grupos de acuerdo con su capacidad de resistencia a la abrasión, al desgaste, al ataque químico, etc.

LOS MODELOS PRODUCIDOS SON CONTROLADOS A TRAVÉS DE LOS ANÁLISIS EFECTUADOS EN LABORATORIOS EXTERNOS ACREDITADOS Y EN NUESTROS PROPIOS LABORATORIOS.

- D** Zonas de tránsito medio, con calzado normal. Aconsejados para todas las estancias de una vivienda privada (cocinas, vestíbulos, pasillos y terrazas), así como despachos, oficinas y lugares de uso similar. Resistencia media a la abrasión.
- E** Para zonas de tránsito regular, como locales comerciales, hoteles, salas de exposición y tiendas. Resistencia relativamente fuerte a la abrasión.

Our products have been designed for different uses and, after technical tests, they have been divided into six groups, depending on their resistance to chemical products, abrasion, etc.

THE RESULTS OF THESE TESTS HAVE BEEN ESPECIFIED IN EACH ONE OF THE MODELS AND HAVE BEEN OBTAINED ACCORDING TO THE ANALYSIS CARRIED OUT BY THE EXTERNAL LABORATORIES AND BY OUR OWN LABORATORIES.

- D** For medium transit areas with normal footwear. Recommended for all areas of private home (kitchens, entrances, corridors and terraces), as well as offices, consulting rooms and other places of similar use. Medium resistance to abrasion.
- E** For areas of regular transit, such as commercial zones, hotels, exhibition rooms and shops. Fairly high resistance to abrasion.



“Rigor, simplicidad, comodidad, elegancia, sofisticación y sensualidad. ¡Pero todas ellas al mismo tiempo!” **Giorgio Armani.**

“Rigor, simplicity, comfort, elegance, sophistication and sensuality. But all of them at the same time!” **Giorgio Armani.**

Wall: Dots R90 pearl matt, Macchia Vecchia R90 silver matt · Floor: Macchia Vecchia Nat 60 silver.





AZTECA

AZTECA PRODUCTS & SERVICES S.L.U.
Ctra. Castellón-Alcora, Km 19,7 · 12110 Alcora (Castellón-Spain)
Tel. (+34) 964 367 500 · comercial@azteca.es



www.azteca.es